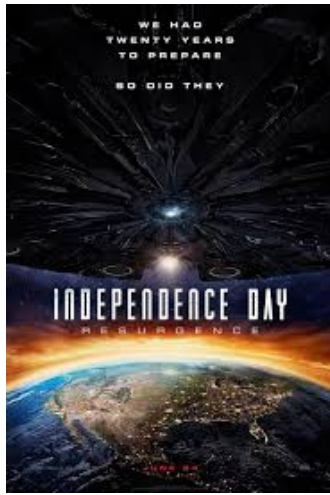


Fin Facts

Bi-Monthly Robinson Fin Machines Newsletter

WATTS OF WISDOM

You don't have to know everything to start the journey.



WHERE'S THE FIN?

If you've ever watched a sci-fi film, you know the characteristics: futuristic tech, alien imagery, sleek lines, and an over-abundance of metals. If you're a set designer for such a film, you're always looking for materials and set pieces that support this aesthetic. *Which is exactly how a small design company stumbled upon our fin!*

RFM has provided Lanced Offset fin for several movie sets, including: **Transcendence**, **Independence Day Resurgence**, and **Enders Game**. Additionally, our fin has been reused in other set designs for movies in the DC and Marvel universes! In Transcendence, Lanced Offset fin was used to emulate cooling systems for their super-powered PINN (Physically Independent Neural Network) Computer Core.

RFM worked with the design company to create a Lanced Offset fin at the appropriate density and specification to meet their set design vision. ***Our fin was a small part that helped tie together the futuristic sets for these Hollywood Blockbusters!***

A MESSAGE FROM LEADERSHIP...

Mark Haushalter, Vice President

I hope everyone's summer is off to a great start! I want to thank all of you for your continued hard work, flexibility, and patience as we navigate the disruptions caused by the building addition and the ongoing reorganization of our facility. Check out the **New & Notable** section to learn more about our planned changes!



We appreciate everyone's help and cooperation as these changes take place. Your experience and insight are valuable, so if you have ideas that could help improve workflow or make better use of the new space, please **share them with Alex Frampton**. We welcome your suggestions as we continue to grow and improve our operation.

Thank you again for everything you do each day to help make our team successful!

Newsletter Highlights

Let's go to the movies...and see fin! —

A message from VP, Mark Haushalter —

A Day in the Life of the Packing Department —

What's coming when the new addition is complete? —

A special highlight for the babies of RFM —

Get excited for RFM's Summer Cookout - July 24!



A "DAY IN THE LIFE" IN PACKING

Packing involves *much more than simply placing parts in boxes*. Behind every shipment is detailed planning, organization, and patience. The packing team completes the final part **quality inspection**, ensures that orders are **packed correctly**, and that **shipments go out on time**.

A typical day in Packing begins with processing paperwork for the previous day's shipments and preparing for today's shipments. Kassie enters electronic job traveler information, updates the job status, records delivery timing, and processes the job traveler while Heather reviews the shipping schedule with Bubba and Naomi to ensure all orders are accounted for and packed correctly. Package details are recorded and sent to the office so shipping documents can be prepared. The team verifies that all information on the packing slip and shipping labels is accurate as they finalize the packages and skids for shipment. Once the day's shipments are ready to go, the team turns its attention to packing and preparing orders for the upcoming days!

Heather and Kassie make up our *smallest department*, but their strong communication, organization, and teamwork allows them to keep shipments moving smoothly and consistently every day. They manage the countless little details that help **ensure fin reaches customers safely, efficiently, and in top-quality condition!**



Biggest Difficulty?

Receiving parts with unclear or incorrect packing instructions. Or receiving parts in which packing instructions weren't followed, creating delays and increasing the risk of shipping errors.

Recent Success?

Additional shelving and workspace which has created more room for inventory storage and improved overall organization and efficiency! **Special shout-out** to Heather, our packing expert. If you have a question about box size, layering method, or packing arrangement - **Heather's your go-to!**

ASK US ANYTHING [Submit](#) a question to leadership.

CHECK OUR STATS FOR APRIL AND MAY

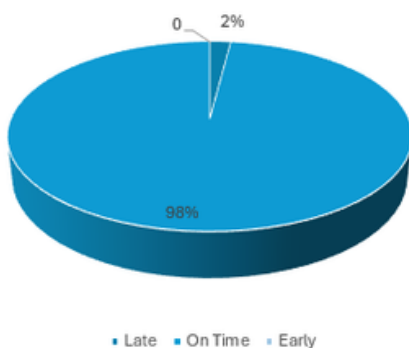
May Rework

In May, we received one rejection from Collins Aerospace (Marston) due to parts being manufactured from incorrect material. A total of 71 pieces of part number 7000904-101 were inadvertently EDM-machined using material intended for part number 7000904-111. The affected parts were remanufactured using the correct material and subsequently shipped without any further issues. **Remember to verify that all material and parts are labeled correctly before placing them in inventory!**

Sales Analysis

Sales continue to be steady. We are seeing some uptick with cold plate fins. [Cold plates are an important tool for temperature regulation; they use liquid cooling to remove thermal energy (heat) from sensitive parts of a mechanical or electronic device]. Altex is quoting their 2027/2028 production so that job will continue as it currently is.

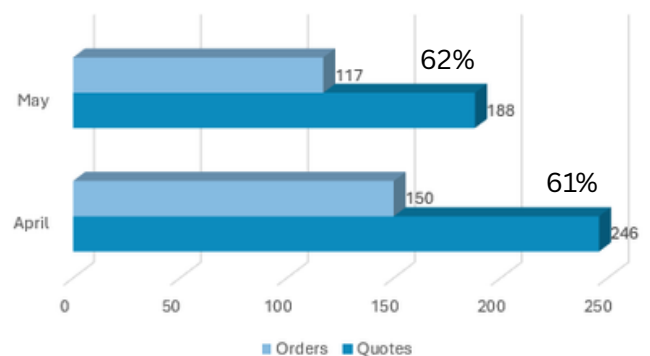
Delivery Performance



RFM Objectives

- 98% of Shipments On-Time or Early
- 60% Quotes to Orders
- 1% or less rework
- 25% or less scrap

Quotes to Orders



We are nearing completion of our new addition! Once we have received final approval for occupancy, we can begin moving equipment and work areas to take full advantage of the additional space. ***These changes are designed to improve workflow, increase efficiency, and make day-to-day operations easier for everyone.***

Some of the planned improvements include expanding the grinding room and adding another grinder, enlarging the graphite saw room and adding a grinder to square up the graphite, relocating the machine shop into the new addition, and moving the wire EDM machines to create more room for reorganizing and expanding the packing area.

We have also purchased four additional spankers for fin production to help improve part flow and increase efficiency. As part of the reorganization effort, these new spankers will be integrated into the Fin Room as we **optimize the layout for better workflow.**

IN THE KNOW

We understand that our workforce faces many challenges both inside and outside of work, and we believe strong leadership begins with listening, supporting employees, and creating opportunities for growth. ***If you are facing challenges or extenuating circumstances outside of work*** that may affect your ability to perform your job, we encourage you to speak with your Supervisor or HR to ***discuss possible support and available options.***

Thank you for your continued dedication, adaptability, and contributions to our workplace. From the production floor to the office, **every role contributes to our shared success.** The work you do matters not only to RFM, but to our customers, coworkers, and community. We appreciate all that you do and look forward to continuing to grow together as a team!

TEST YOUR RFM KNOWLEDGE

Enter your response [here](#) for a chance to win some RFM swag!

Laws governing businesses change all the time. For instance, between 1983 and 2000 there was an advantage to being a business that was:

- Located in a Rural Area
- Woman Owned and Run
- Manufacturing Metal Products
- Located Outside City Limits

A NOTE OF ADVICE

Training takes time. Don't expect yourself or others to know everything immediately.

- TERESA MCKEE



Be Well at RFM

RFM offers three Health Insurance Plans, available to any full-time employee outside of their Probationary Period. One of these options is the 6500 HSA plan: 2026 weekly pricing at \$72.86 (Single) or \$154.92 (Family) with RFM contributing \$16.81 (S) or \$50.75 (F) weekly to your HSA. The HSA plan has a lower deductible than the Base plan; but has more out-of-pocket expenses for basic care. However, an HSA can have **several benefits** for you and your family.

1. HSA funds stay with you until you spend them, ***you don't lose them*** at year-end or if you leave your current job.
2. You can use HSA funds even when you're not contributing to the account, which can be especially ***useful in retirement!***
3. HSAs have several tax benefits: no FICA or income taxes on contributions (*if direct from paycheck*) and ***tax free when used on qualified health expenses.*** Qualified expenses include menstrual products, over-the-counter medicines, sunscreen, weight-loss programs, and more!

Community Spread

UPCOMING COMMUNITY EVENTS

Date	Event	Location	Time	Cost
Starting June 11	Thursday Food Truck Takeover	Home Savings & Loan Company	Weekly 11:00am	Varies
June 13	Saturday Market on Main (Kenton)	Corner of Main St and Ohio St	Weekly 9am - 12pm	Varies
June 13	Summer Concert Series	Kenton Historic Courthouse District	6pm - 9pm	FREE
June 16	Total Wellness Tuesdays (Tips for Aging)	St. Johns Evangelical Church	Weekly 11am - 12:30pm	FREE
Starting June 19	Food Truck Friday	Quest Federal Credit Union	Weekly 11:00am	Varies
June 19 - 21	9 to 5 Musical Watch Alex in the show :)	Holland Theater, Bellevue	7:30 Fri & Sat 2:00 Sun	\$25
July 10 - 12	Tree Town Festival	Gormley Park, Forest	Check Agenda in Link	FREE
July 18	Eats on the Streets	Kenton Historic Courthouse District	5pm - 10pm	FREE
July 19 - 22	Armor of God Vacation Bible School	St. Johns Evangelical Church	5pm - 7pm	FREE
July 25	Annual Designer Purse Bingo for Safe Haven of Hardin County	Kenton Moose	5 pm - 8 pm	\$40

Do you have something to include in the next newsletter?
Fill out this [form](#) by July 31.

The Baby Pages

If you'd like your child or grandchild featured in the newsletter, please submit this [form](#)!



JUST BORN - WINSLEE GRACE

We have a **new Mom and two Grandma's** in the house! Winslee Grace Brown, daughter to Mariana Brown and granddaughter to Melissa Corwin and Jolene Brown. Winslee was born May 27, 2026, weighing 6 lb 6 oz and measuring 17.5 inches long. Mom and baby are healthy and happy! **Congratulations to the Brown family!**

ZAYDA JEAN



Born 04.12.2025

Daughter of Natalie Oglesbee

DEBRIANNA JO



Born 10.21.2025

Daughter of Heather Thacker

WALTER LAVERNE



Born 11.05.2025

Son of Chad and Megan Kyser

CHARLOTTE ROSE



Born 01.08.2026

Daughter of Adri Wright



A FAMILY LOOKING TO ADOPT

Becca Holland's brother, Josh and his wife, Chelsey, are looking to add to their family through adoption! Check out their [profile](#) to learn more.

Josh and Chelsey are a warm, faith-rooted couple from Ohio whose 15-year marriage grew out of a shared love of ministry and service. They've built a picture-perfect family life on two acres with a farmhouse full of laughter, two beloved rescue dogs, and two already-excited kids who are eagerly saving stuffed animals and making room in their hearts for a new sibling.

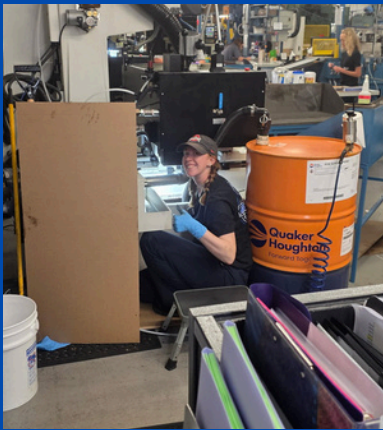
With deep roots in their community, a sprawling and loving extended family close by, and a life rich with outdoor adventures, homemade breakfasts, board games, and cozy movie nights, Josh and Chelsey offer a child not just a loving home — but a beautifully full life already in motion, just waiting for one more.

Upcoming Events @ RFM

Closed - July 2 (Unpaid) and July 3 (Paid)

Company Wide Meeting July 17

Summer Cookout July 24



Ashtin Henry, getting down and dirty while cleaning a Belmont EDM!

PULSE CHECK

Fill out this [quick survey](#) to let us know how you feel at RFM.



WORK ANNIVERSARIES & LIFE EVENTS

Upcoming Birthdays

Jon Stephens - June 9
Heather Watts - June 10
Mariana Brown - June 11
Jonathan King - June 14
Alex Frampton - June 15
Travis Stanley - June 16
Nick Szczerba - June 17
Clay Hastings - June 18
Tyler Howard - June 18

Roni Blanton - June 25
Pixie Wilson - June 27
Gage Buxton - June 29
Jolene Brown - July 1
Aric Overly - July 5
Lance Colding - July 5
Nathaniel Lowe - July 7
Brooklyn Diehl - July 17

Ashtin Henry - July 18
Damon Hord - July 21
Layla Hunter - July 22
Chad Kyser - July 23
Teresa McKee - July 23
Kerry Pogue - July 26
Nancy Nunez-Taylor - July 26
Bob Edler - July 30
Becca Holland - July 31

Upcoming Work Anniversaries

Gage Buxton - June 6 (2 Years)
Melissa Collins - June 9 (1 Year)
John Pifer - June 14 (**33 Years**)
Deven Bradley - June 27 (4 Years)
David Haushalter - July 1 (**39 Years**)
Nathaniel Lowe - July 8 (**30 Years**)

Teresa McKee - July 9 (**19 Years**)
Brian Harder - July 14 (1 Year)
Patrick Taylor - July 15 (2 Years)
Kathy James - July 20 (**16 Years**)
Lance Poeppelman - July 22 (2 Years)
Brittany Hornback - July 29 (2 Years)
Josh Tudor - July 29 (**13 Years**)

JOIN US FOR OUR SUMMER COOKOUT

Date: July 24 (Rain Date - August 21)

Time: 4:30 - 7:30 pm [Open House]

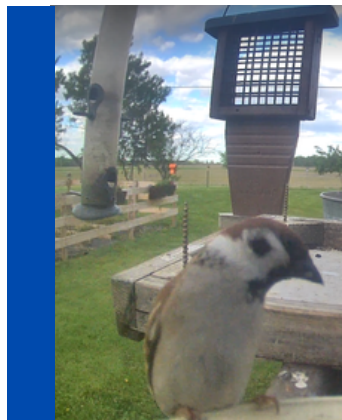
Menu: Cookout Staples, Cookies, Soft Drinks, Seltzers, and Beer

Activities:

- Bouncy House
- Outdoor Games
- Dunk Tank (*opportunity to dunk your favorite team members!*)
- Facility Tours
- Raffle Baskets



If you plan on drinking, please make plans in advance to drink responsibly!



AN EXTRAORDINARY SIGHT

Kevin Eikenbary is an avid birdwatcher, often observing the species that visit his home in Hardin County. On May 14, Kevin noticed a sparrow that didn't quite look like the typical house sparrow. After submission to Cornell's eBird, it was confirmed that he saw a Eurasian Tree Sparrow - a species typically only seen in St. Louis! *Kevin's sighting is one of only two sightings in Ohio in the past 30 years!* Check out his [submission](#).